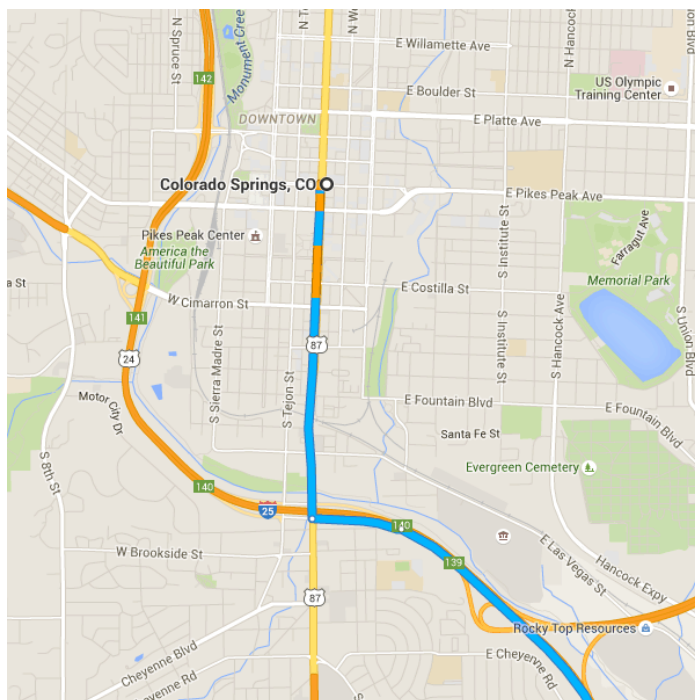


## Colorado Springs, CO

### Get on I-25 S

- ↑ 1. Head northwest on E Pikes Peak Ave toward US-85 N/US-87 N
  - ↶ 2. Turn left at the 1st cross street onto S Nevada Ave
  - ↶ 3. Turn left to merge onto I-25 S
- 5 min (1.7 mi)  
59 ft  
1.3 mi  
0.4 mi



Follow I-25 S to US-160 W in Huerfano County.  
Take exit 50 from I-25 S

1 h 14 min (89.7 mi)



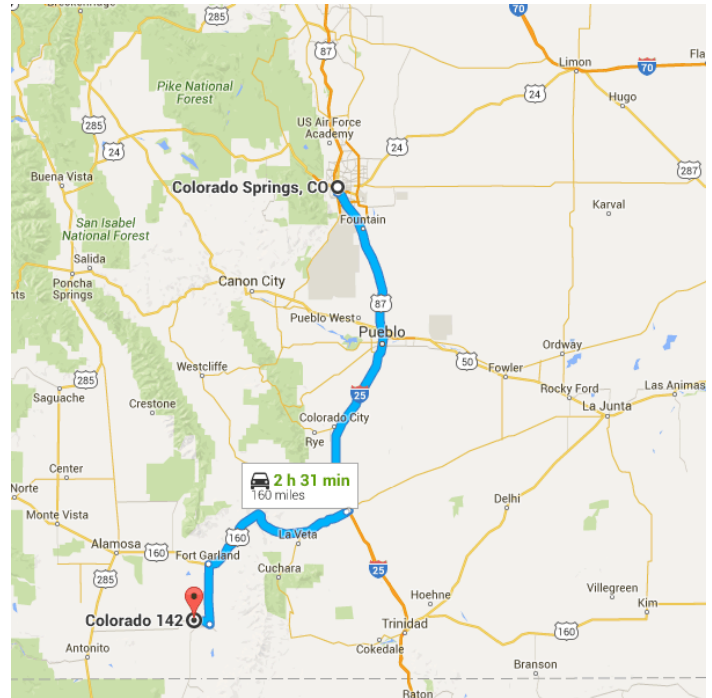
4. Merge onto I-25 S

89.6 mi



5. Take exit 50 for U.S. 160 W

0.2 mi



## Follow US-160 W and CO-159 S to CO-142 W in Costilla County

1 h 11 min (68.4 mi)



6. Turn left onto US-160 W

0.9 mi



7. Turn left onto US-160 W/Main St

0.1 mi



8. Turn right at the 2nd cross street onto US-160 W/W 7th St

 Continue to follow US-160 W

47.0 mi



9. Turn left onto CO-159 S

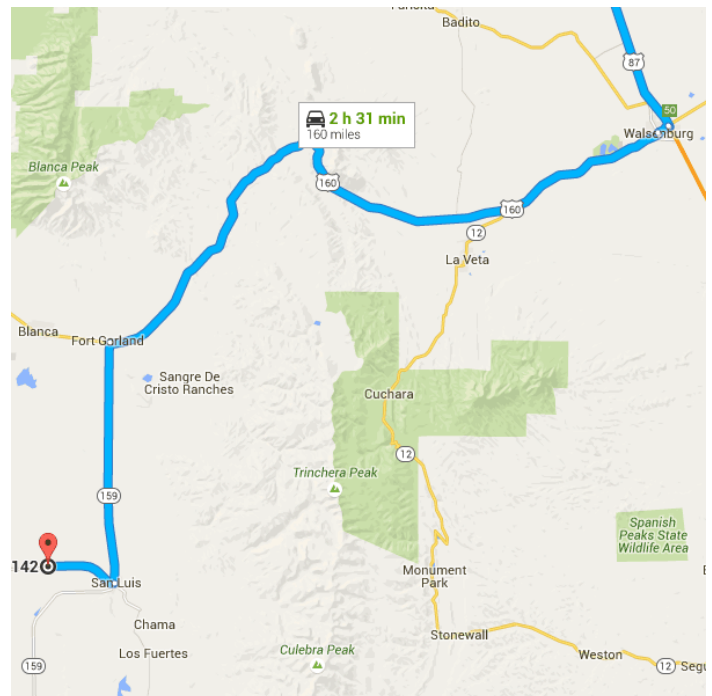
15.7 mi



10. Turn right onto CO-142 W

 Destination will be on the left

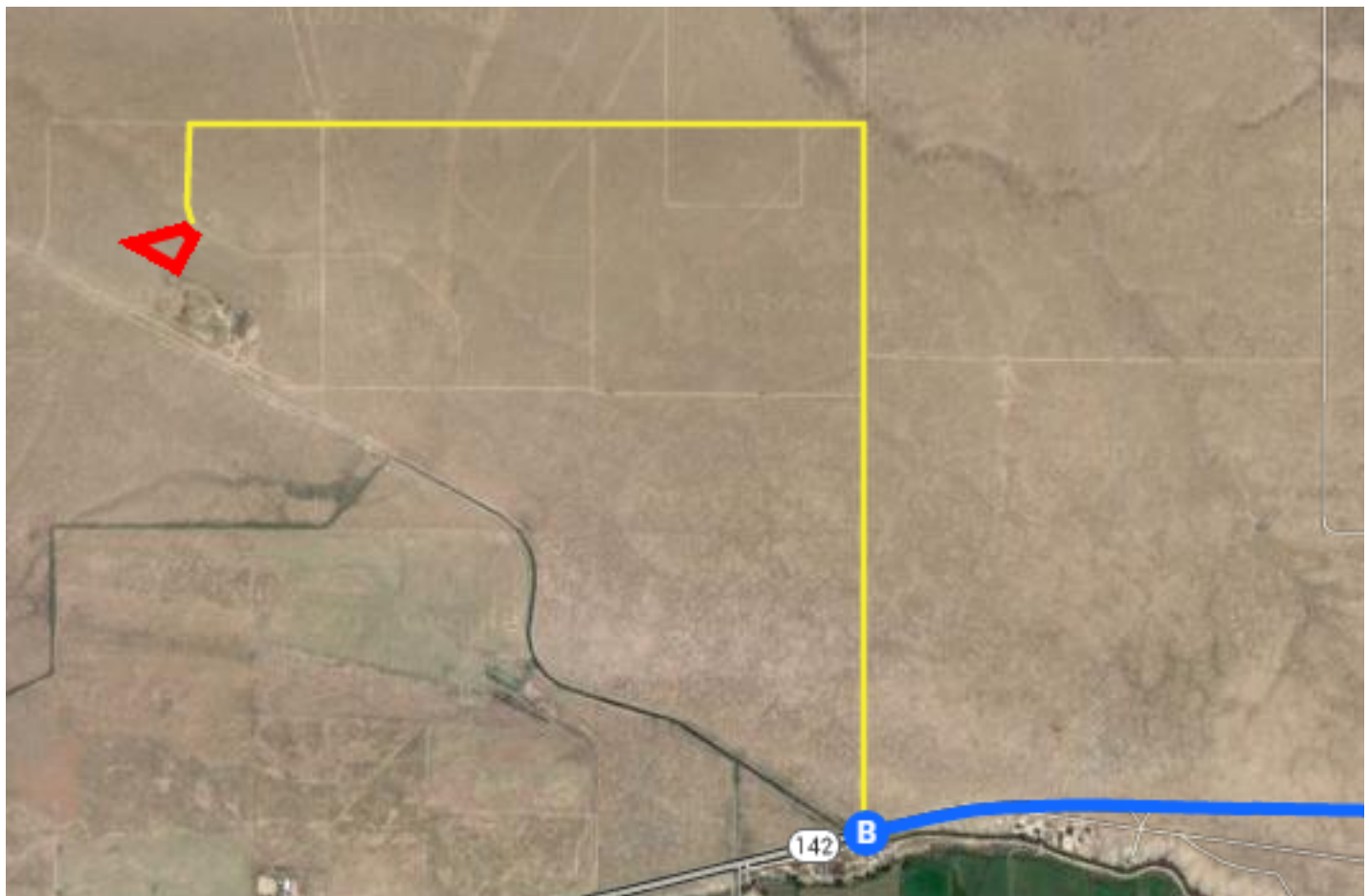
4.7 mi



## Colorado 142

Sanford, CO 81151

These directions are for planning purposes only. You may find that construction projects, traffic, weather, or other events may cause conditions to differ from the map results, and you should plan your route accordingly. You must obey all signs or notices regarding your route.



### Continued Directions

At the end of the Google earth directions turn right and continue 1.31 miles. Turn left and continue 1.25 miles. Turn left and continue along the dirt road for 957 feet. Property on right.