

Kingman, AZ

Get on I-40 W from E Andy Devine Ave/Historic Rte 66 and W Beale St

- 4 min (1.3 mi)
- ↑

1. Head south on N 4th St toward E Andy Devine Ave/Historic Rte 66

292 ft
- ➡

2. Turn right at the 1st cross street onto E Andy Devine Ave/Historic Rte 66

0.4 mi
- ↑

3. Continue straight onto Ella's Pl

295 ft
- ↶

4. Turn left onto W Beale St

0.4 mi
- ⤴

5. Turn left to merge onto I-40 W toward Los Angeles

0.3 mi

Follow I-40 W to AZ-95 S. Take exit 9 from I-40 W

- 32 min (38.7 mi)
- ⤴

6. Merge onto I-40 W

38.5 mi
- ➡

7. Take exit 9 for AZ-95 S toward Lake Havasu City/Parker

0.3 mi

Continue on AZ-95 S. Drive to Rice Dr

- 16 min (8.2 mi)
- ↶

8. Turn left onto AZ-95 S

5.0 mi
- ↶

9. Turn left onto Havasu Heights Rd

1.0 mi
- ↑

10. Continue onto Skyview Dr

0.1 mi
- ↶

11. Turn left onto Wagon Wheel Dr

0.5 mi
- ➡

12. Turn right onto Rice Dr

0.6 mi
- ➡

13. Turn right onto Rancho Vista Dr

177 ft
- ↶

14. Turn left onto Rice Dr

i

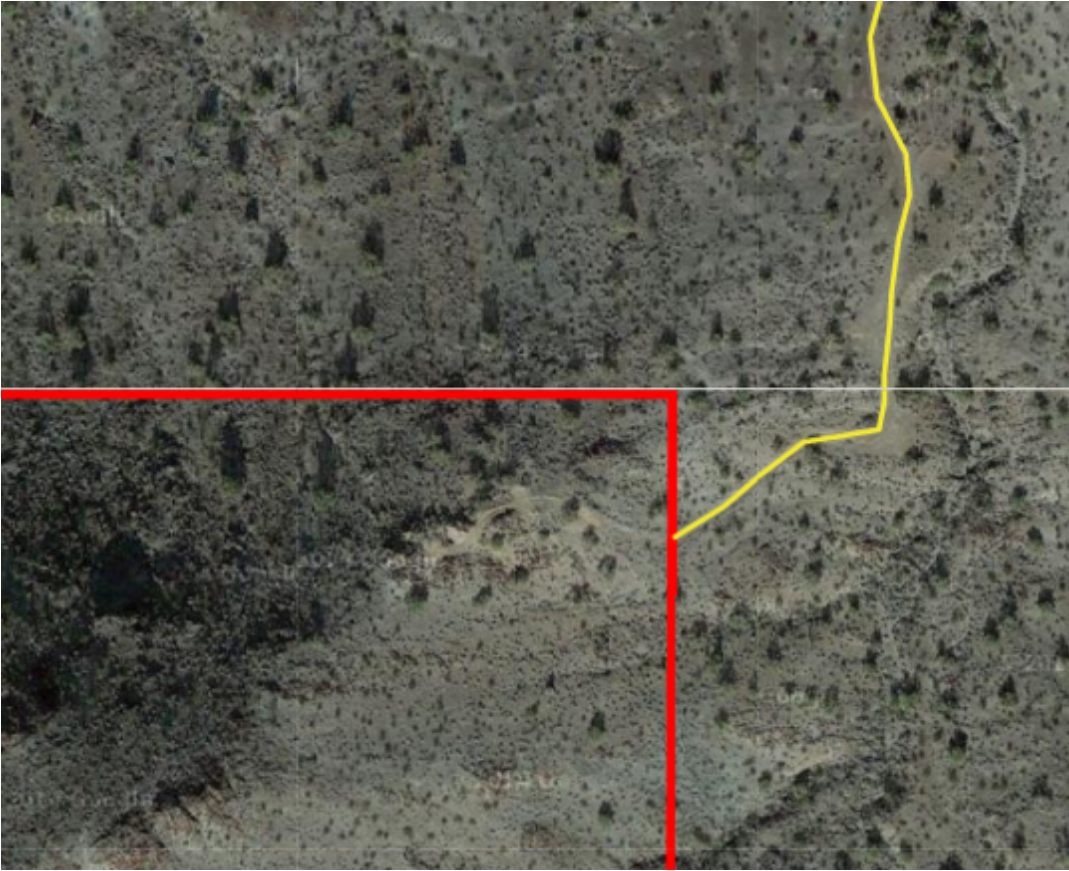
Destination will be on the right

1.0 mi

Rice Dr

Lake Havasu City, AZ 86404





Continued Directions

At the end of the Google Earth directions continue along the dirt road for 1.53 miles to the NE corner of the property.