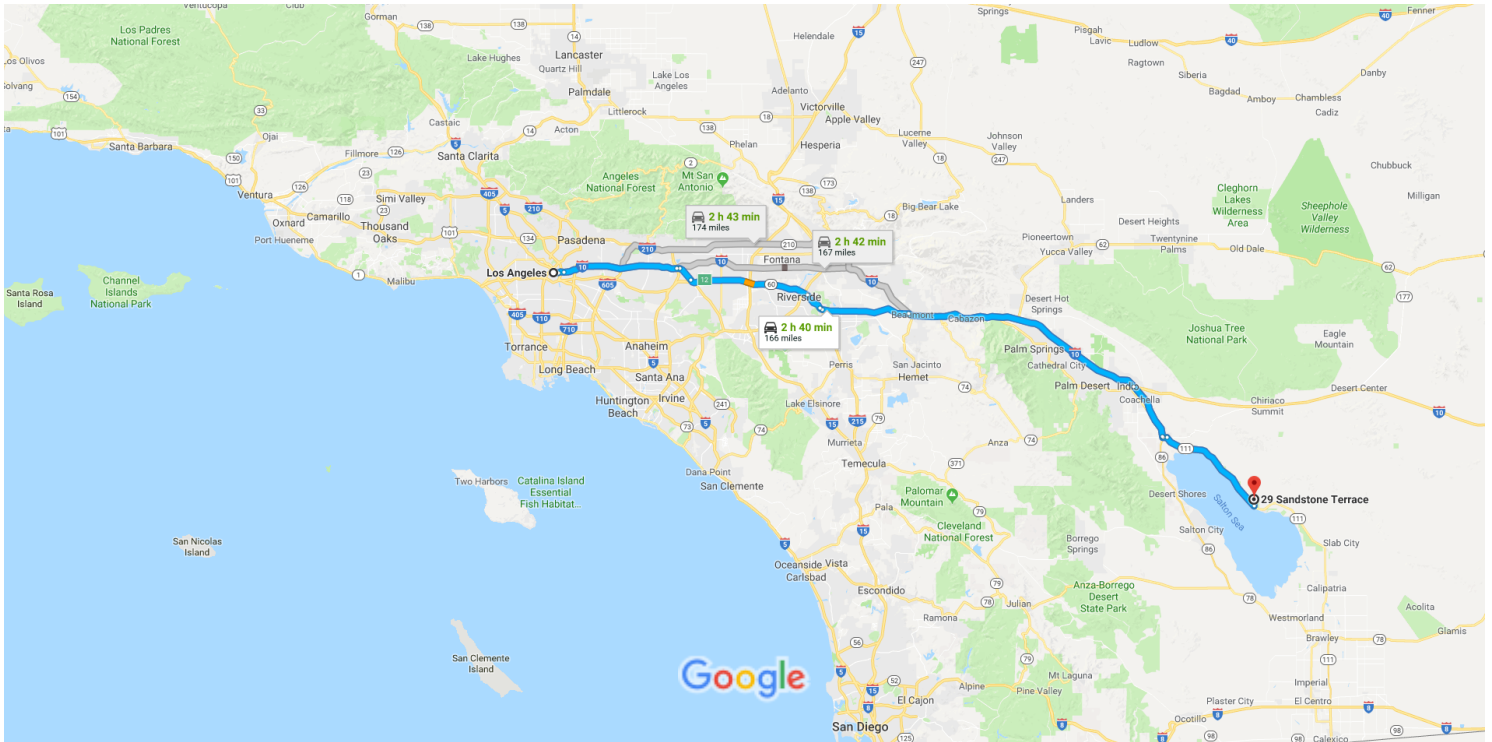




Los Angeles, CA to 29 Sandstone Terrace, Niland, Drive 166 miles, 2 h 40 min
CA 92257



Map data ©2018 Google, INEGI 10 mi

Los Angeles

California

Get on US-101 S

1. Head southeast on W 1st St toward N Main St
2 min (0.5 mi)
2. Turn left onto N Los Angeles St
459 ft
3. Turn right to merge onto US-101 S toward Interstate 10 Fwy E/Interstate 5 Fwy S
0.3 mi
0.1 mi

Drive from I-10 E, CA-60 E, I-10 E and CA-86 S to Riverside County

4. Merge onto US-101 S
2 h 8 min (139 mi)
5. Keep left at the fork to continue on San Bernardino Fwy, follow signs for San Bernardino/Interstate 10 E
0.7 mi
6. Continue onto I-10 E/San Bernardino Fwy
1.2 mi
23.3 mi
7. Take the CA-71 S exit toward Corona
0.7 mi

- 8. Continue onto CA-71 S 3.2 mi
- 9. Use the right 2 lanes to take exit 12 to merge onto CA-60 E toward Riverside 24.5 mi
- 10. Merge onto CA-60 E/I-215 S 4.0 mi
- 11. Continue straight to stay on I-215 S 0.4 mi
- 12. Keep left at the fork to continue on CA-60 E 18.2 mi
- 13. Merge onto I-10 E 50.6 mi
- 14. Keep right to continue on CA-86 S, follow signs for Brawley/El Centro/865 Expy 12.1 mi

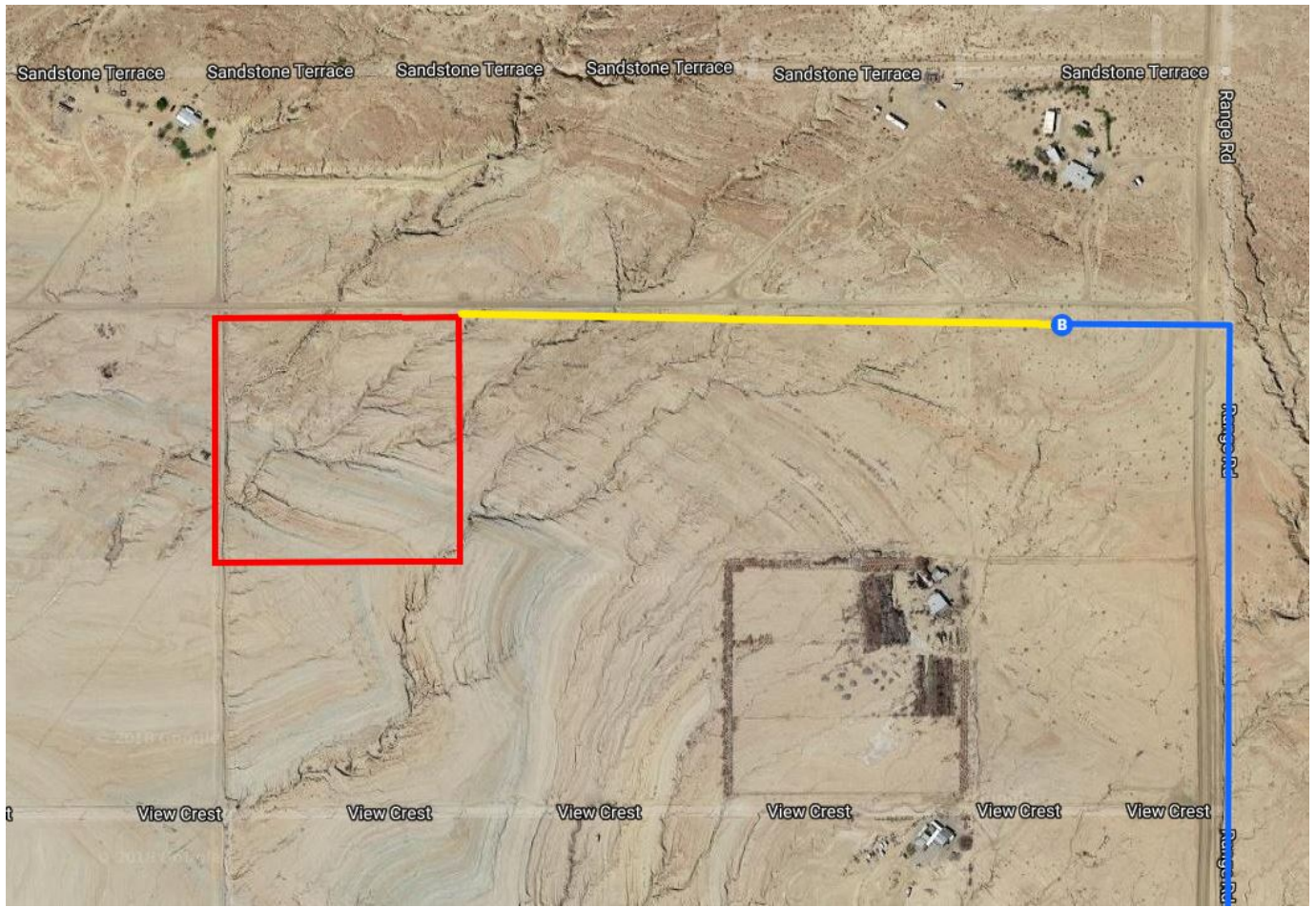
Follow CA-111 S to your destination in Imperial County

- 15. Slight left toward CA-195 (signs for 66th Ave E) 32 min (26.3 mi)
- 16. Turn left onto CA-195 0.2 mi
- 17. Turn right onto CA-111 S 0.8 mi
- 18. Turn left onto Range Rd 23.8 mi
- 19. Turn left 1.5 mi
- 440 ft

29 Sandstone Terrace

Niland, CA 92257

These directions are for planning purposes only. You may find that construction projects, traffic, weather, or other events may cause conditions to differ from the map results, and you should plan your route accordingly. You must obey all signs or notices regarding your route.



Continued Directions

At the end of the Google Earth directions, continue straight along the dirt road for another 0.3 of a mile. NE corner of the property on left.