


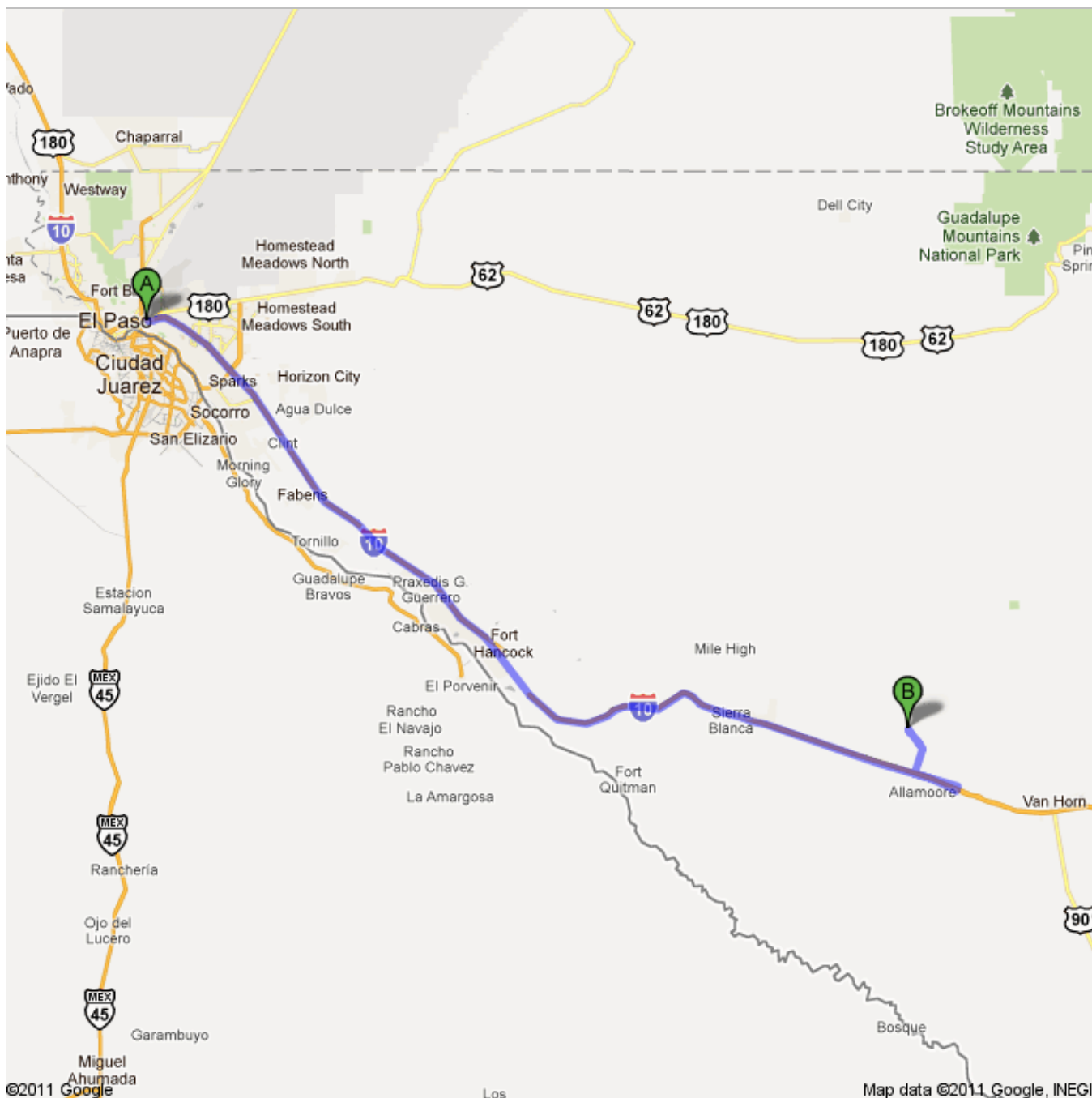


Directions to Unknown road
116 mi – about 2 hours 23 mins

Save trees. Go green!
Download Google Maps on your phone at google.com/gmm



7289





I-10 E

1. Head **east** on **I-10 E** toward **Exit 23B**

About 1 hour 47 mins

go 105 mi

total 105 mi

2. Take exit **129** toward **Allamore/Hot Wells**

About 1 min

go 0.4 mi

total 106 mi

3. Turn left at **Guest Ranch Rd**

About 2 mins

go 0.5 mi

total 106 mi



4. Turn left

About 12 mins

go 4.7 mi

total 111 mi



5. Turn right

About 11 mins

go 2.7 mi

total 114 mi



6. Turn left

About 3 mins

go 0.7 mi

total 114 mi



7. Turn right

About 8 mins

go 2.0 mi

total 116 mi



Unknown road

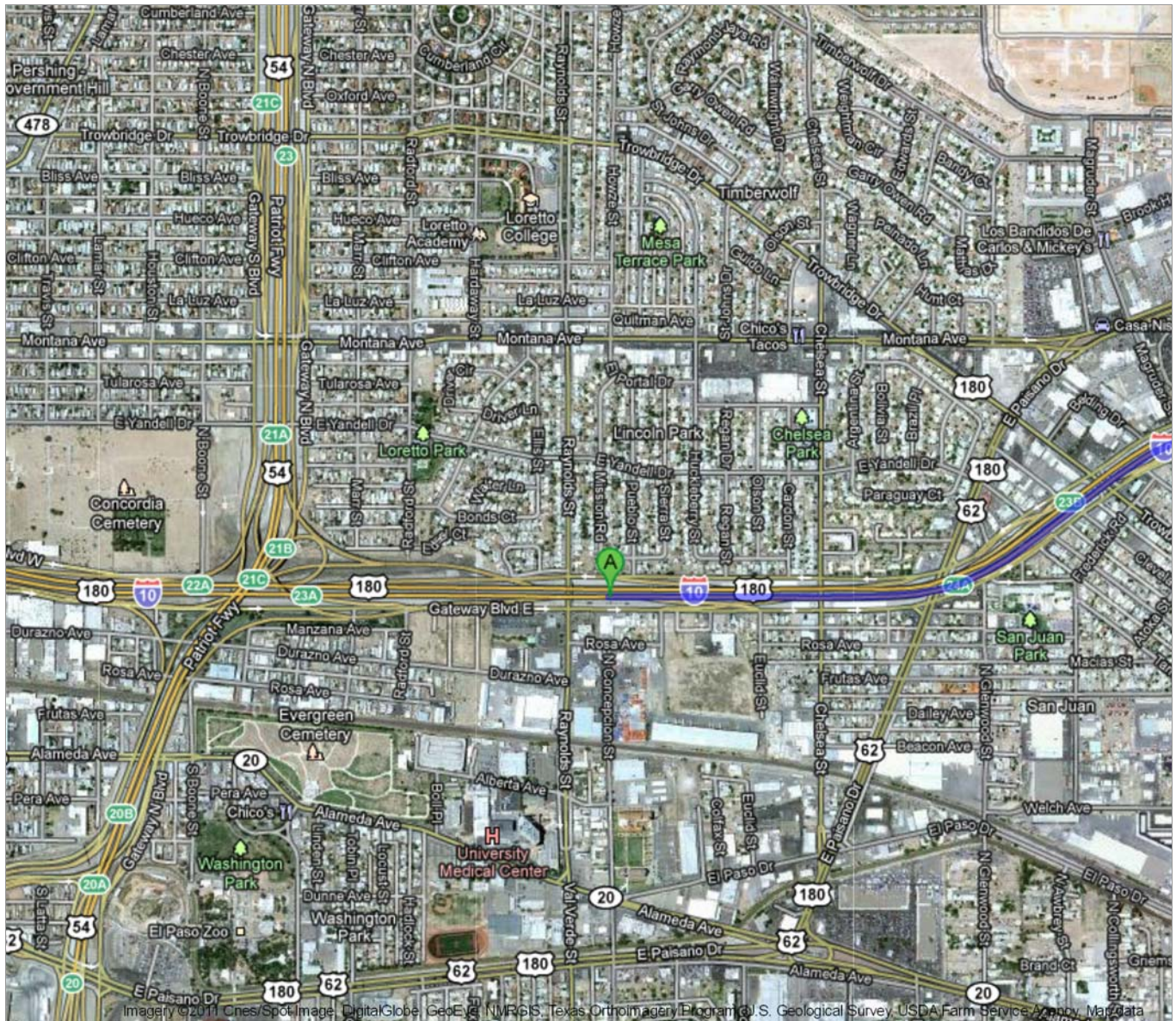
These directions are for planning purposes only. You may find that construction projects, traffic, weather, or other events may cause conditions to differ from the map results, and you should plan your route accordingly. You must obey all signs or notices regarding your route.

Map data ©2011 Google, INEGI

Directions weren't right? Please find your route on maps.google.com and click "Report a problem" at the bottom left.



To see all the details that are visible on the screen, use the "Print" link next to the map.



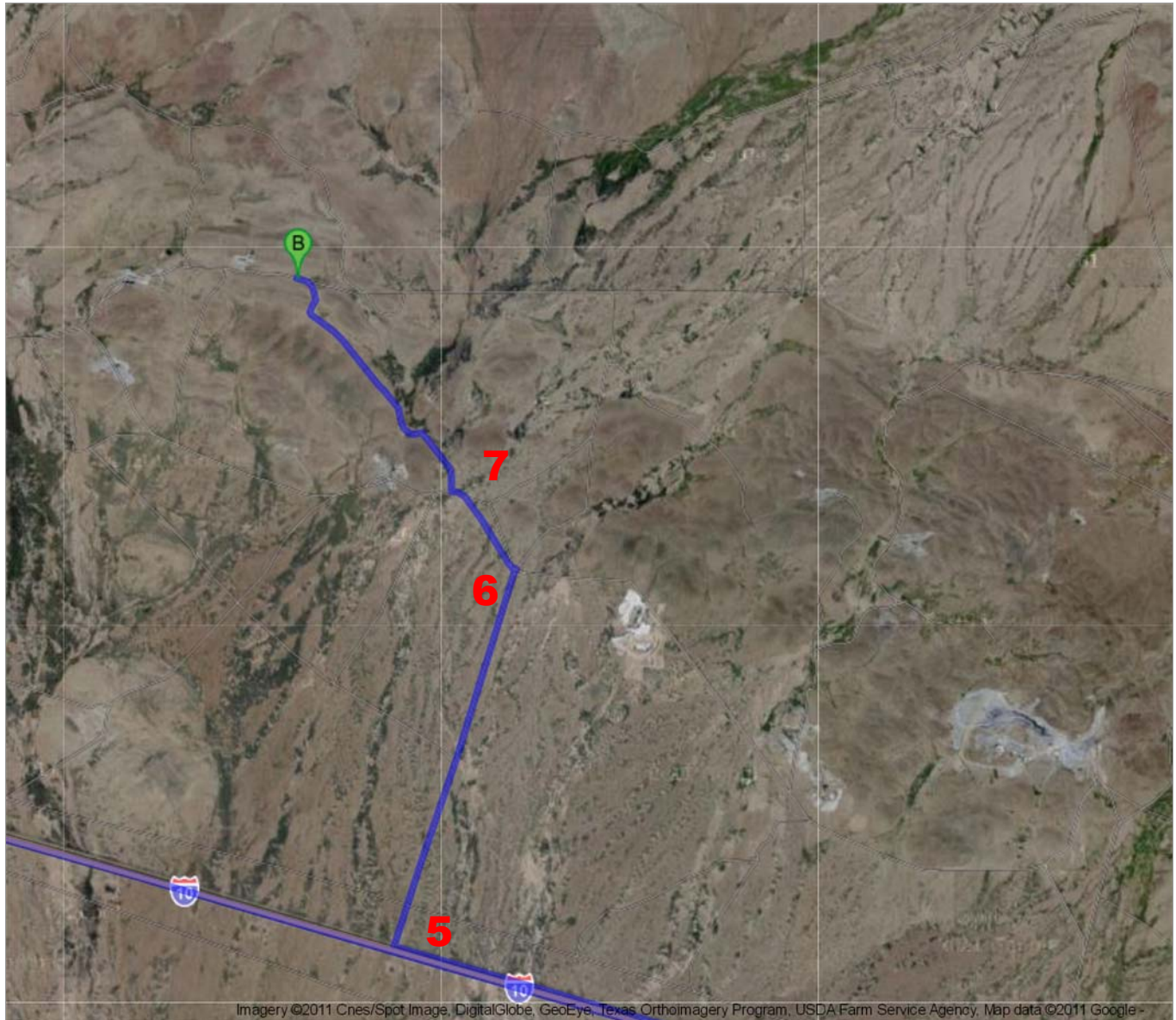


To see all the details that are visible on the screen, use the "Print" link next to the map.





To see all the details that are visible on the screen, use the "Print" link next to the map.



Imagery ©2011 Cnes/Spot Image, DigitalGlobe, GeoEye, Texas Orthoimagery Program, USDA Farm Service Agency, Map data ©2011 Google -



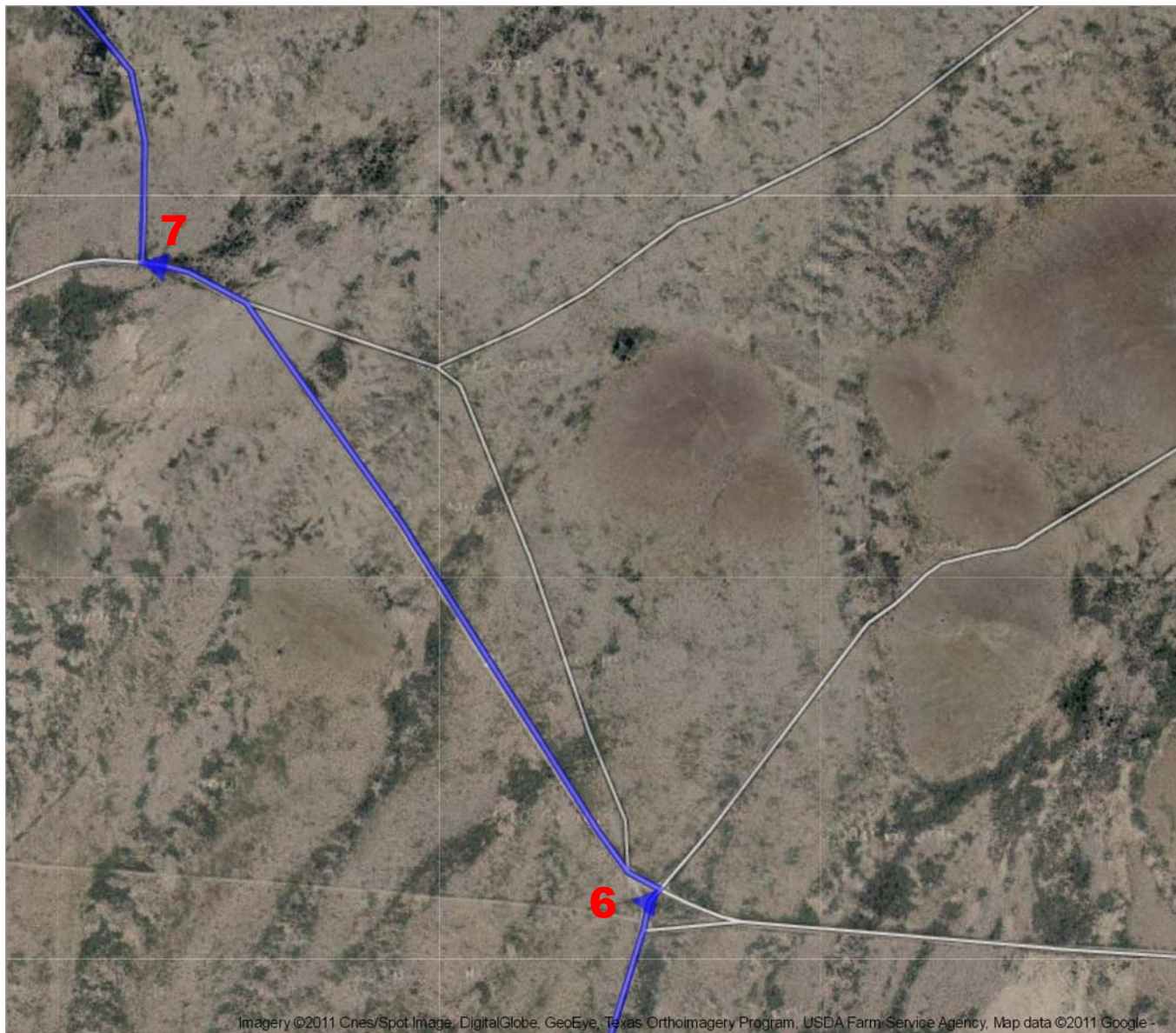
To see all the details that are visible on the screen, use the "Print" link next to the map.



Imagery ©2011 Cnes/Spot Image, DigitalGlobe, GeoEye, Texas Orthoimagery Program, USDA Farm Service Agency, Map data ©2011 Google -



To see all the details that are visible on the screen, use the "Print" link next to the map.



Imagery ©2011 Cnes/Spot Image, DigitalGlobe, GeoEye, Texas Orthoimagery Program, USDA Farm Service Agency, Map data ©2011 Google



To see all the details that are visible on the screen, use the "Print" link next to the map.

