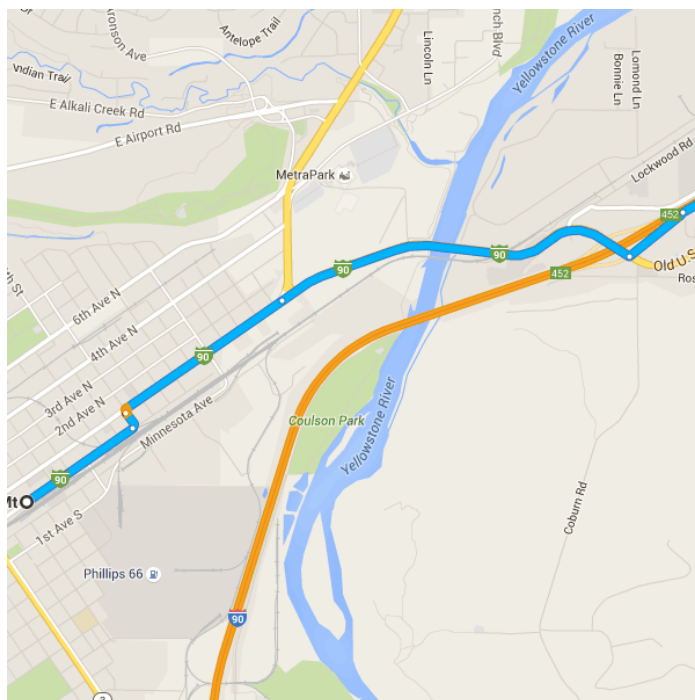


Imagery ©2015 Landsat, Map data ©2015 Google 20 mi

## Billings, Mt

Get on I-90 E in Lockwood from 1st Ave N and I-90BUS E

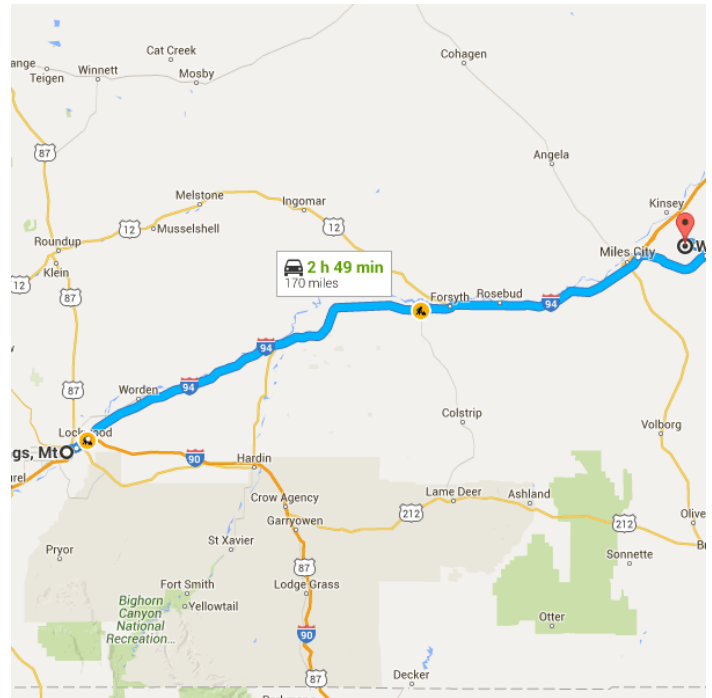
- |   |   |
|---|---|
|   | 6 min (2.8 mi)                                    |
| ↑ | 1. Head northeast on Montana Ave toward N 23rd St |
|   | 0.5 mi  |
| ↶ | 2. Turn left onto N 18th St                       |
|   | 354 ft  |
| ↷ | 3. Turn right onto 1st Ave N                      |
|   | 0.7 mi  |
| ↑ | 4. Continue straight onto I-90BUS E               |
|   | 1.3 mi  |
| ↶ | 5. Turn left to merge onto I-90 E                 |
|   | 0.2 mi  |



Follow I-94 E to US-12 E in Custer County. Take exit 141 from I-94 E

1 h 58 min (144 mi)

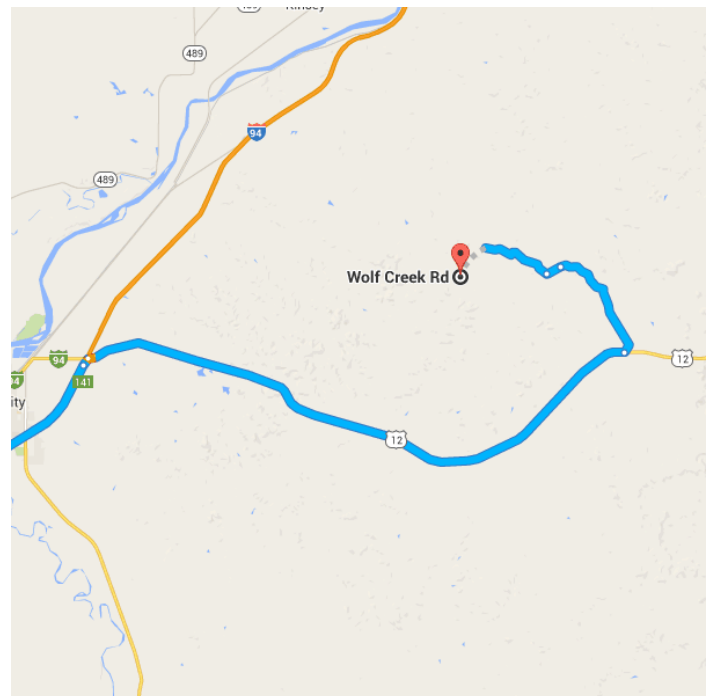
6. Merge onto I-90 E  
3.2 mi
7. Keep left to continue on I-94 E  
140 mi
8. Take exit 141 for US-12 E toward Miles City  
0.2 mi



### Continue on US-12 E. Drive to Davis Rd

42 min (23.3 mi)

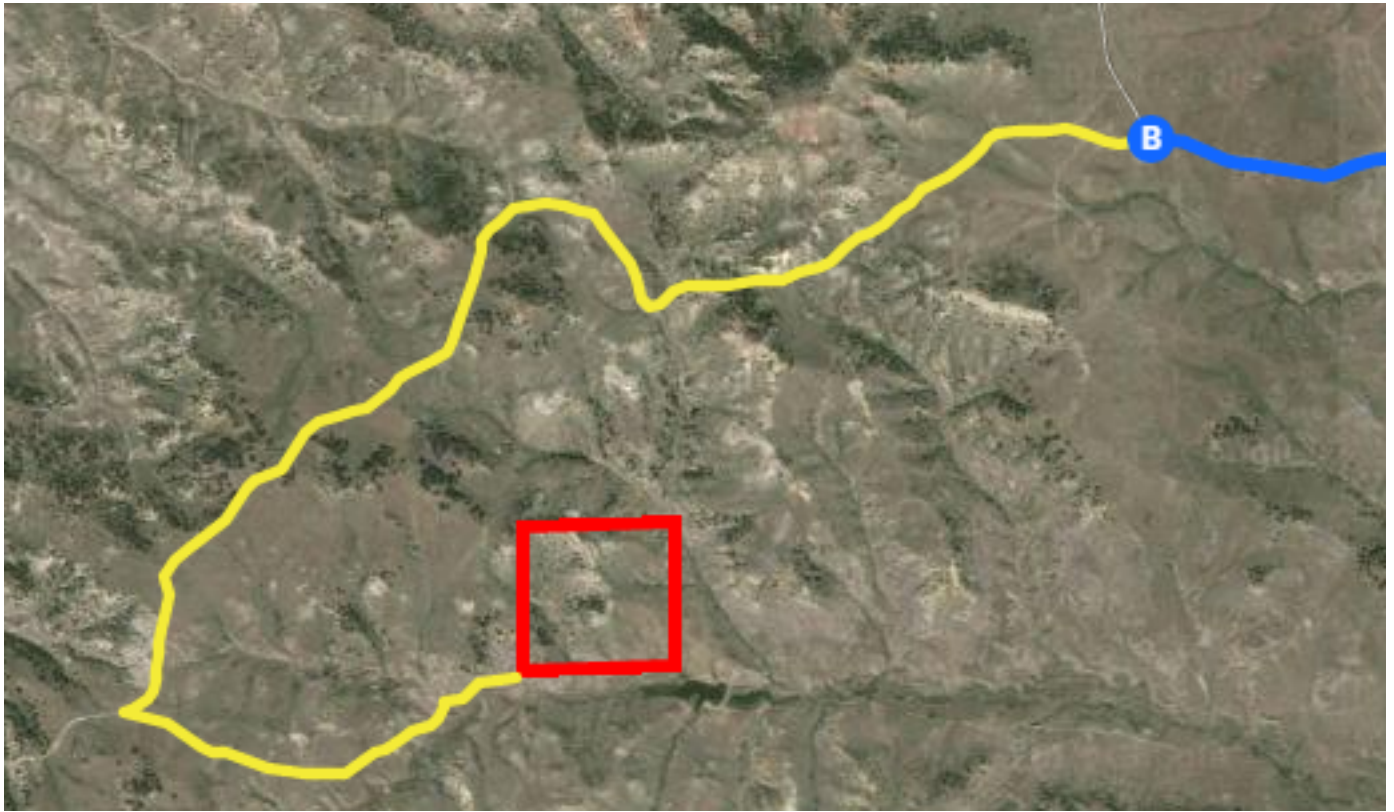
9. Turn right onto US-12 E  
17.2 mi
10. Turn left  
3.5 mi
11. Continue onto Wolf Creek Rd  
0.4 mi
12. Turn right onto Davis Rd  
2.1 mi



## Wolf Creek Rd

Miles City, Mt 59301

These directions are for planning purposes only. You may find that construction projects, traffic, weather, or other events may cause conditions to differ from the map results, and you should plan your route accordingly. You must obey all signs or notices regarding your route.



### Continued Directions

At the end of the Google earth directions turn left and continue 470 feet. Continue right and follow the dirt road for 218 feet. Turn left and continue 2.08 miles. Take a sharp left turn and continue 0.672 of a mile to the SW corner of the property.